

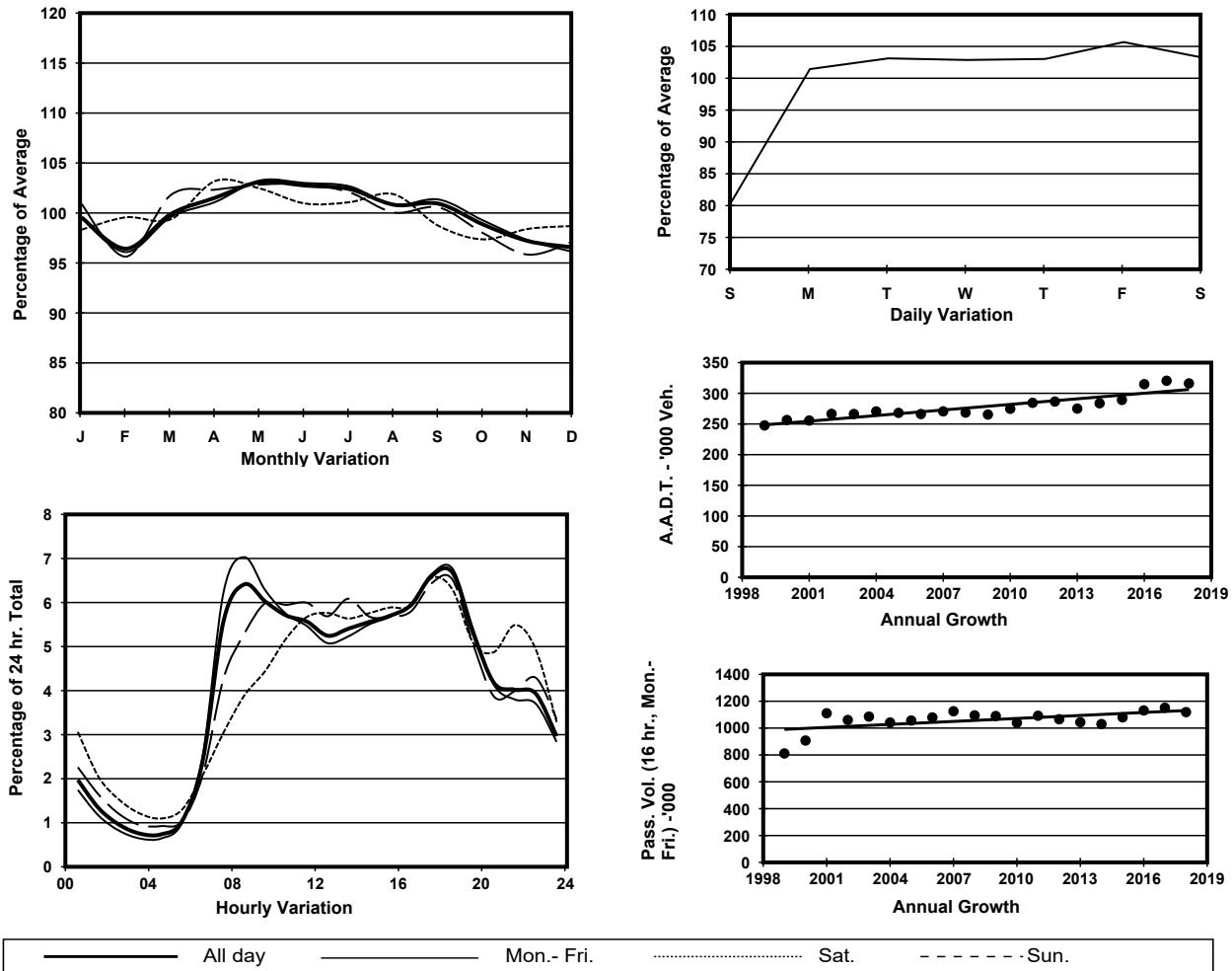
YEAR 2018

Location Screenline S-S(East end of Tuen Mun & Yuen Long)

Stations on Cordon/Screenline

5012, 5016, 5029, 6207, 6208 and 6209

## 1. TRAFFIC FLOW VARIATION AND GROWTH



## 2. TRAFFIC CHARACTERISTICS (BY DIRECTION)

Parameter	All - Day	Mon. - Fri.	Sat.	Sun.
<b>EAST BOUND</b>				
A.A.D.T.	154950	162030	162020	123920
R 12 / 24 - %	73.7	75.1	72.5	66.7
R 16 / 24 - %	88.6	89.3	87.7	85.4
AM Peak Hour	0800-0900	0800-0900	0900-1000	0900-1000
One-way flow at AM peak hour	11940	13830	11430	6220
T - % (AM)	-	19.9	-	-
PM Peak Hour	1700-1800	1700-1800	1800-1900	1700-1800
One-way flow at PM peak hour	9630	10150	9760	7790
T - % (PM)	-	23.7	-	-
Prop.of commercial vehicles - 16 hr.	-	23.7	-	-
<b>WEST BOUND</b>				
A.A.D.T.	161160	167730	167960	133450
R 12 / 24 - %	67.2	68.3	66.4	61.6
R 16 / 24 - %	87.1	88	85.4	83.5
AM Peak Hour	0800-0900	0800-0900	0900-1000	0900-1000
One-way flow at AM peak hour	8330	9350	8320	5220
T - % (AM)	-	25.3	-	-
PM Peak Hour	1800-1900	1800-1900	1800-1900	1800-1900
One-way flow at PM peak hour	11850	12600	11740	9100
T - % (PM)	-	16.7	-	-
Prop.of commercial vehicles - 16 hr.	-	23.9	-	-

## 3. OTHER INFORMATION AND COMMENT

4. Vehicle classification and occupancy - Monday to Friday

Time		Class of vehicle									
		Motor Cycle	Private Car	Taxi	Private LB	PLB	Goods veh.		Non Fr. Bus	Fr. Bus	
							Light	M & H		SD	DD
0700-0800	Pro	2.6	45.6	8.0	0.8	2.5	17.1	15.1	4.2	0.1	4.2
	Ocp	1.0	1.5	2.0	7.4	12.6	1.5	1.1	27.2	26.2	67.3
0800-0900 Peak Hour	Pro	1.7	50.8	7.0	0.5	1.8	16.2	14.4	3.9	0.1	3.7
	Ocp	1.0	1.4	2.1	5.9	13.6	1.5	1.2	24.5	20.2	61.8
0900-1000	Pro	1.4	40.5	7.5	0.4	1.9	22.2	19.9	2.5	0.1	3.7
	Ocp	1.1	1.4	2.0	2.5	11.3	1.4	1.2	12.9	15.1	36.3
1000-1100	Pro	1.2	36.2	6.6	0.2	1.9	24.0	24.3	2.0	0.1	3.6
	Ocp	1.1	1.4	1.9	1.8	11.1	1.4	1.2	20.2	14.1	31.7
1100-1200	Pro	0.8	39.2	7.4	0.5	2.0	22.3	22.5	2.0	0.1	3.4
	Ocp	1.1	1.4	2.0	2.8	10.0	1.3	1.1	20.4	9.2	34.4
1200-1300	Pro	0.7	39.5	6.9	0.6	2.2	20.2	24.0	2.5	0.1	3.4
	Ocp	1.1	1.4	1.9	6.2	11.0	1.4	1.2	16.0	11.9	33.1
1300-1400	Pro	0.7	37.1	7.2	0.5	2.2	23.2	23.6	2.1	0.1	3.2
	Ocp	1.0	1.4	1.9	2.4	10.5	1.4	1.1	14.5	16.5	38.5
1400-1500	Pro	1.1	36.0	7.0	0.5	1.7	23.2	25.4	1.8	0.1	3.2
	Ocp	1.0	1.4	2.0	3.2	11.4	1.4	1.2	16.7	12.3	33.6
1500-1600	Pro	1.1	39.1	6.2	0.4	1.8	23.5	22.8	2.0	0.1	3.1
	Ocp	1.1	1.5	1.9	4.7	11.2	1.4	1.2	13.7	10.0	35.1
1600-1700	Pro	1.3	39.9	6.9	1.0	2.0	22.4	20.3	2.6	0.1	3.6
	Ocp	1.0	1.4	2.0	4.3	12.2	1.5	1.2	14.2	20.1	39.7
1700-1800	Pro	2.5	45.2	6.5	0.9	1.9	20.8	15.7	2.7	0.1	3.7
	Ocp	1.0	1.4	2.2	2.8	14.2	1.4	1.1	20.3	13.4	52.4
1800-1900	Pro	2.4	57.7	7.0	0.2	2.0	13.7	10.0	3.3	0.1	3.8
	Ocp	1.0	1.4	2.0	1.2	15.2	1.3	1.1	26.9	14.1	73.4
1900-2000	Pro	1.6	61.7	7.7	0.1	2.2	10.5	8.6	3.6	0.1	4.1
	Ocp	1.1	1.3	2.0	1.2	12.4	1.3	1.1	20.5	12.1	59.6
2000-2100	Pro	1.5	58.5	10.9	0.1	2.7	9.9	8.4	3.4	0.1	4.5
	Ocp	1.2	1.4	2.0	1.7	11.0	1.4	1.1	13.7	12.7	43.9
2100-2200	Pro	2.3	55.7	14.5	0.2	2.9	8.5	8.7	2.4	0.1	4.7
	Ocp	1.1	1.4	2.0	1.6	9.7	1.3	1.1	15.9	10.6	40.6
2200-2300	Pro	2.0	59.8	14.6	0.1	2.2	7.8	6.8	1.7	0.1	5.0
	Ocp	1.1	1.3	1.9	2.0	11.6	1.4	1.1	14.7	10.3	39.9
16 hours	Pro	1.6	45.9	7.9	0.5	2.1	18.4	17.3	2.7	0.1	3.8
	Ocp	1.1	1.4	2.0	4.1	11.9	1.4	1.1	19.6	14.5	46.7

Legend

**Pro.** Proportion of vehicles in % (Sum may not add up to 100% due to figure rounding)\*

**Ocp.** Average occupancy of vehicles including both driver and passengers\*

**M&H** Medium and Heavy

\* All traffic data are collected from combined bounds except for one way traffic